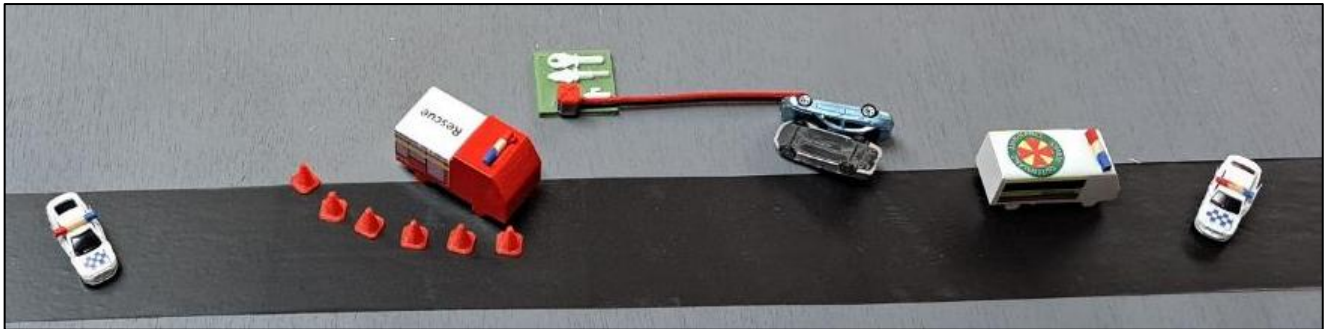


Crash / Rescue Kit

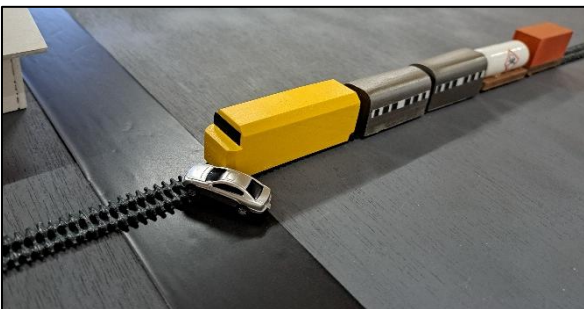
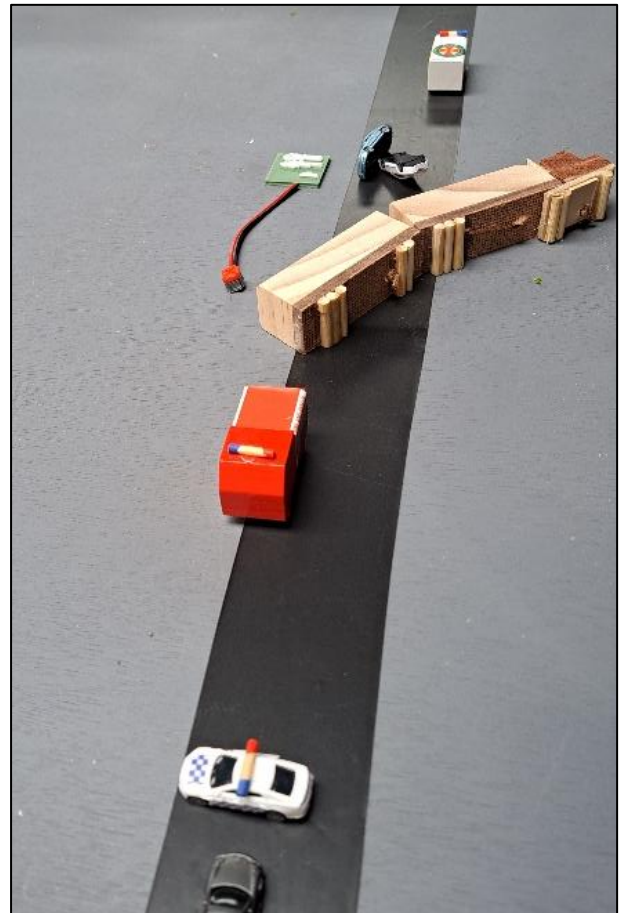
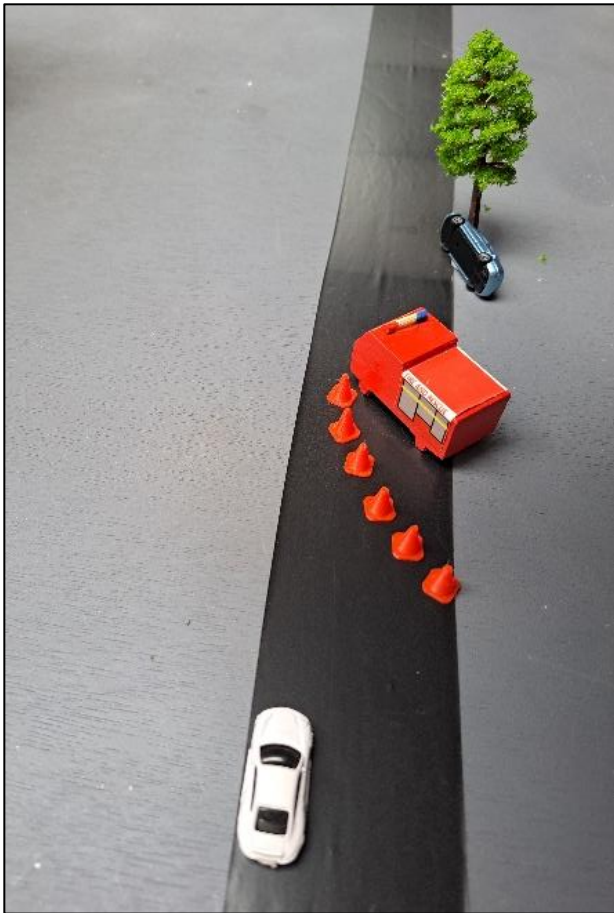
Compatible with all models, this kit is available as a package for **\$171 (includes GST, current January 2026).**

The Crash / Rescue Kit can be used to create crash scenarios involving aircraft, cars, busses and trains.

To design your own Crash / Rescue Kit, please select your items from the tables below and return this form to info@bushfiremodel.com.au for a custom quote.

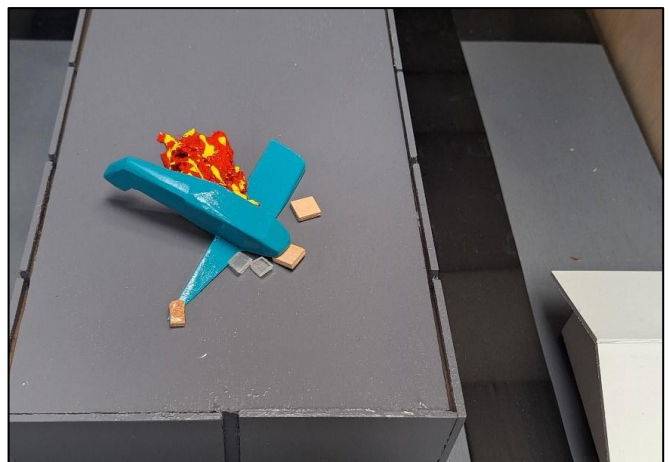


Item	Kit contains	Quantity required
Ambulance	2	
Bus	1	
Car with fuel leak	1	
Car Vs House	1	
Car fire	1	
Casualties (set of 4 – red, yellow, orange & seated)	1	
Communication panel – functional sector (set of 3)	1	
Crash debris	1	
Fuel spill (yellow)	1	
Helicopter - rescue	1	
Light plane crash	1	
Police car	2	
Rescue stretcher / litter (empty)	1	
Rescue stretcher / litter (with casualty)	1	
Rescue tools on salvage sheet	1	
Road cones (set of 6)	1	
Train – freight train (engine & 6 carriages)	1	
Tree with separate base	2	



Rail line is included in Standard Kit

Shown with plume & spill (HAZMAT Kit)



Other popular items for customising this kit include:

Item	Quantity required
Train – Electric passenger (two sections)	
Truck – Semi-trailer / Road train (included in Standard Kit)	
Truck – Fuel truck with running fuel fire	

