

Design Your Own Model

The Bushfire Model is available in ready-made kits, but you can also create your own custom model by selecting from the extensive range of items listed in this form.

The options include components from our packaged kits as well as many custom - made pieces.

Simply complete the form and email it to info@bushfiremodel.com.au for a personalised quote. If you need something not listed, just let us know.



Photo courtesy: Roleystone Volunteer Fire & Rescue Service

CONTENTS

The links below offer a quick way to access the information you need.

[Aircraft](#)

[Appliances & specialist support vehicles](#)

- [Australian Capital Territory](#)
- [New South Wales](#)
- [Northern Territory](#)
- [Queensland](#)
- [South Australia](#)
- [Tasmania](#)
- [Victoria](#)
- [Western Australia](#)

[Ambulances and other emergency vehicles](#)

[Specialist equipment](#)

[Assets](#)

- [Buildings](#)
- [Other](#)

[Direction & Scale Tools](#)

[Fire Features](#)

[Incident Control Features](#)

[Landscape Features](#)

[Machinery](#)

[Markers](#)

- [Fuel Cards](#)

[HAZMAT](#)

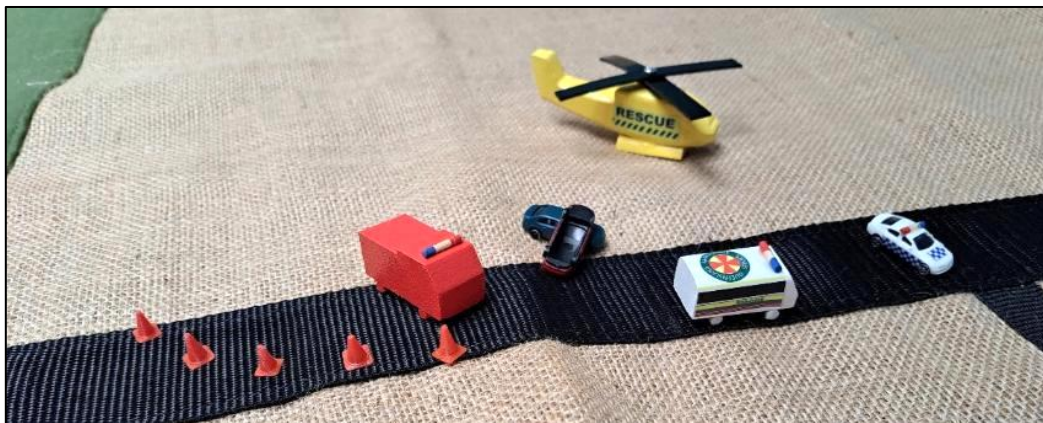
[Crash / Rescue](#)

[Land Search](#)

[Severe Weather](#)

Aircraft

Item	Quantity Required
Helitak - Bell 214B	
Air Attack Supervisor (fixed wing)	
Air Attack Supervisor (rotary wing)	
Drone	
Drone (incendiary)	
Helicopter - rescue	
Helicopter & Bambi Bucket	



Aircraft

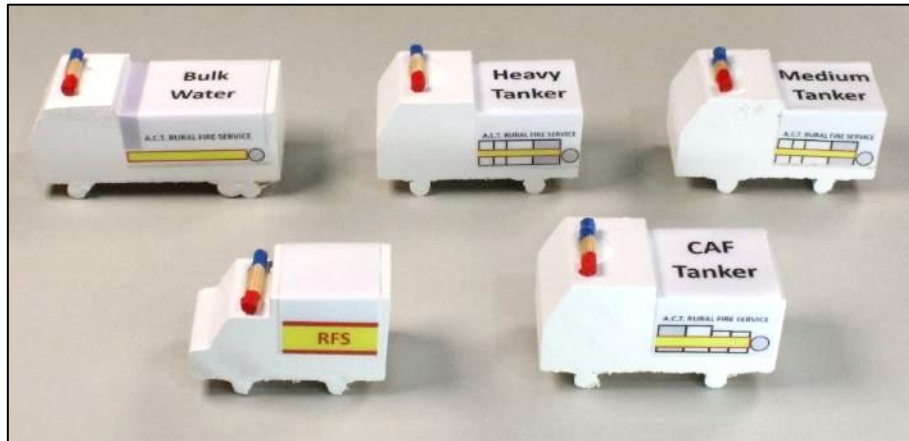
Item	Quantity Required
Helicopter with aerial incendiary (capsules)	
Helicopter with aerial incendiary (drip torch)	
Helitak - Blackhawk	
Large Air Tanker & retardant drop	
Water bomber (Air Tractor AT802)	
Water bomber drop (foam)	
Water bomber drop (retardant)	
Water bomber drop (gel)	
Water bomber drop (water)	



Appliances & specialist support vehicles

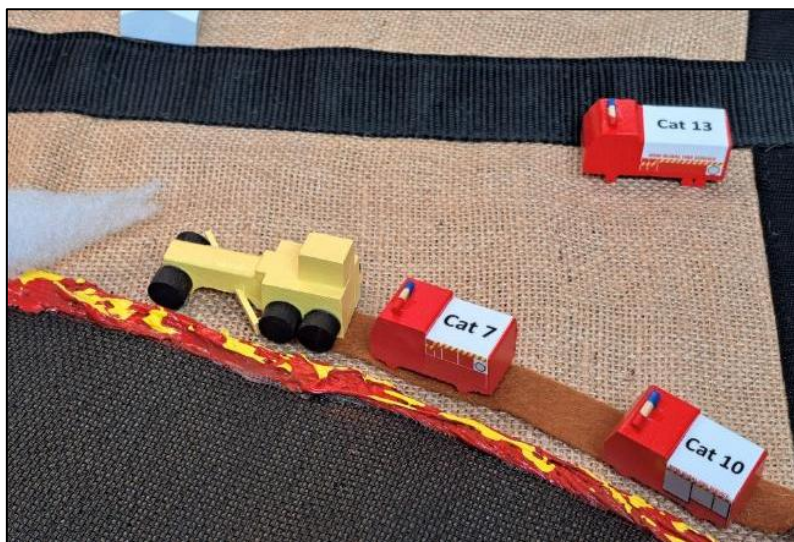
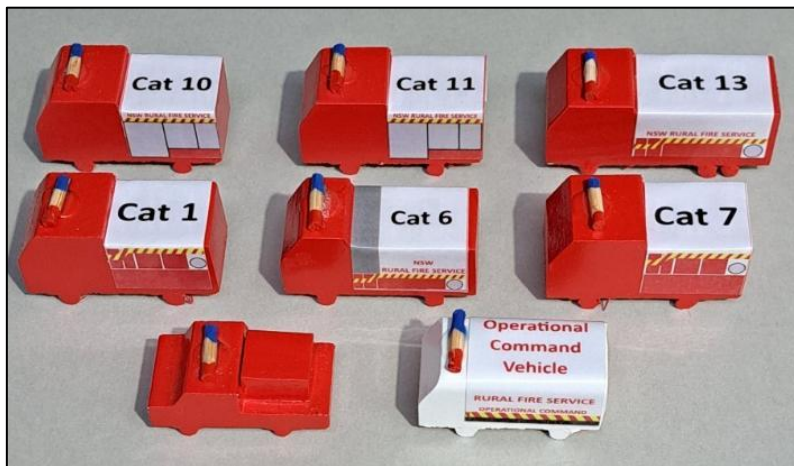
Australian Capital Territory

Item	Quantity Required
ACT Parks - Command Unit	
ACT Parks - Heavy Tanker	
ACT Parks - Medium Tanker	
ACT Parks - Tanker	
ACT RFS - Bulk Water	
ACT RFS - CAF Tanker	
ACT RFS - Command Unit	
ACT RFS - Heavy Tanker	
ACT RFS - Medium Tanker	
ACT RFS - Pumper	



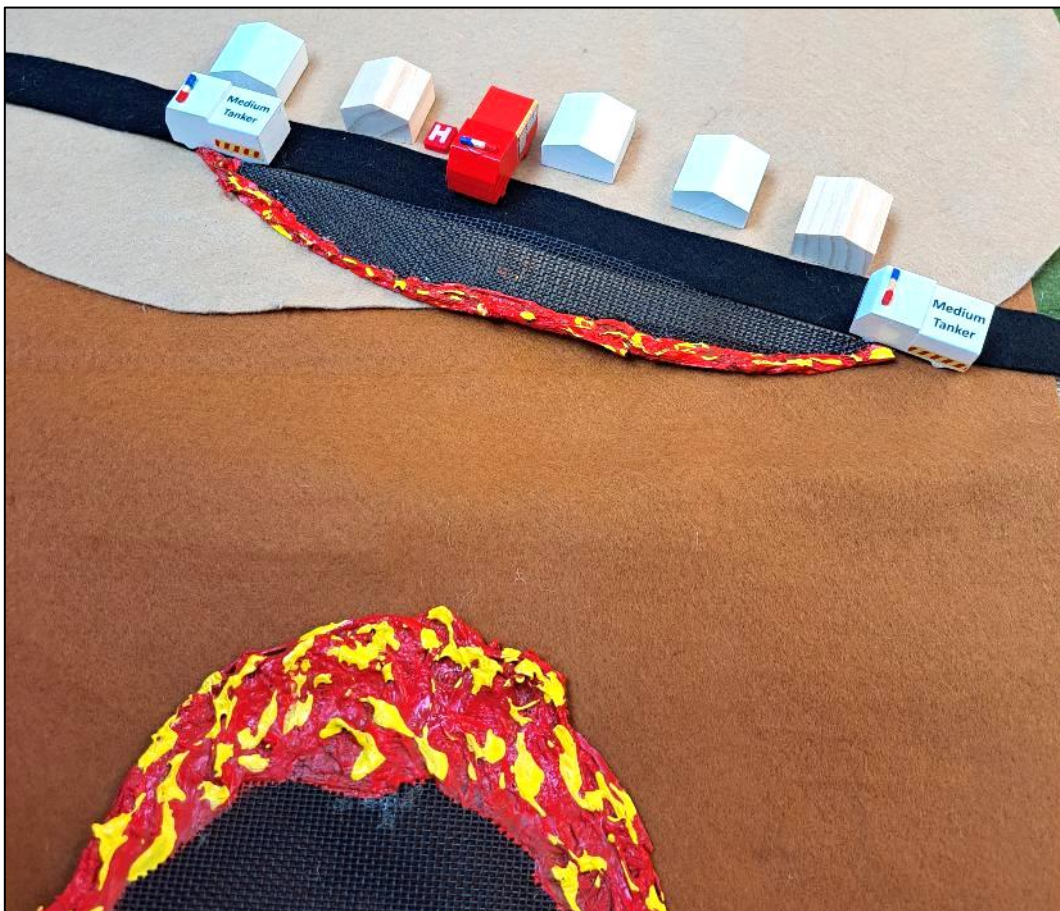
New South Wales

Item	Quantity Required
NSW Fire & Rescue Command	
NSW Fire & Rescue HAZMAT	
NSW Fire & Rescue Light Tanker	
NSW RFS - CAT 1	
NSW RFS - CAT 10	
NSW RFS - CAT 11	
NSW RFS - CAT 13	
NSW RFS - CAT 6	
NSW RFS - CAT 7	
NSW RFS - CAT 9	
NSW RFS - OCV	
NSW RFS - Quick fill	



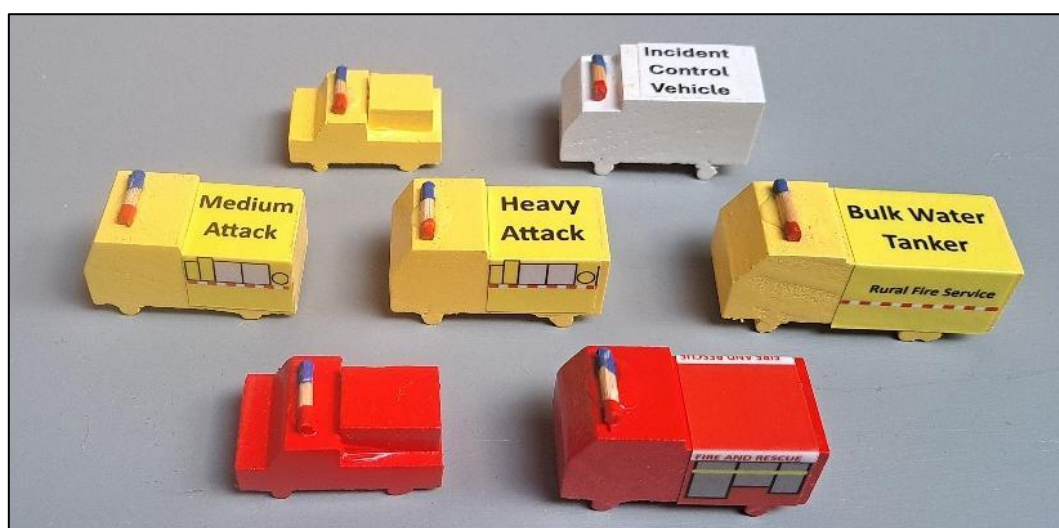
Northern Territory

Item	Quantity Required
Bushfires NT - Grass Fire Unit	
Bushfires NT - Medium Attack	



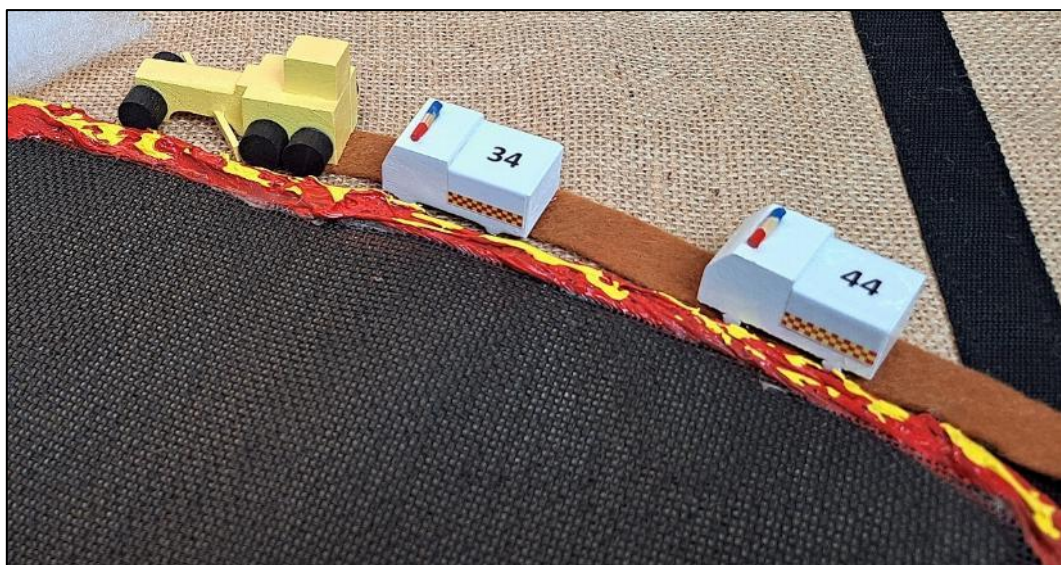
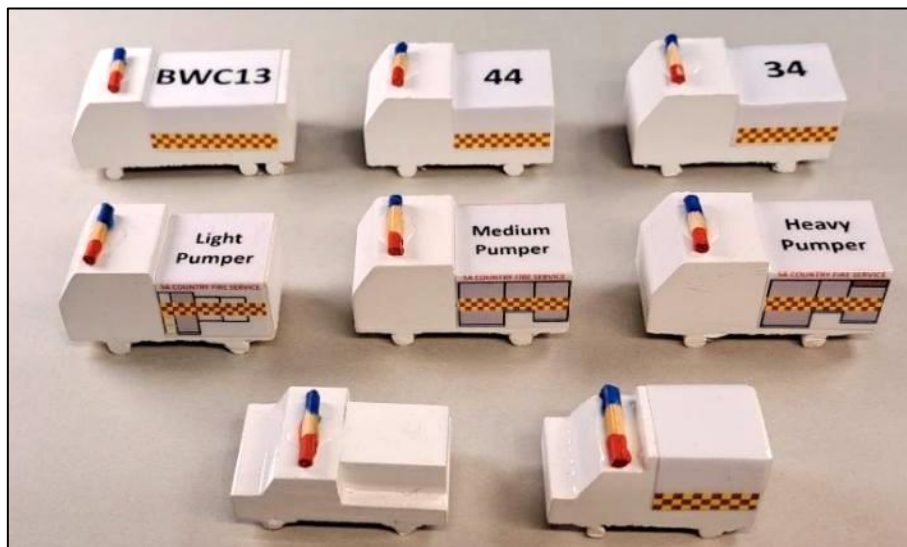
Queensland Fire Department

Item	Quantity Required
QFR - Command	
QFR - Pumper	
QFR - Rescue	
QFR - Urban Light Attack	
RFSQ - Bulk Water Tanker	
RFSQ - Fast Attack	
RFSQ - Heavy Attack	
RFSQ - Medium Attack	
RFSQ - Fast fill Trailer	



South Australia

Item	Quantity Required
CFS - 34	
CFS - Quick Response / (Light Rural)	
CFS - Light Pumper	
CFS - 44	
CFS - BWC 13	
CFS - Command vehicle	
CFS - Heavy Pumper	
CFS - Medium Pumper	
CFS - Trailer Pump	



Tasmania

Item	Quantity Required
TFS – Command Support	
TFS - Medium Pumper	
TFS - Medium Tanker	
TFS - Heavy Pumper	
TFS - Heavy Tanker	
TFS - Rescue	
TFS - Tanker Pumper	



Victoria

Item	Quantity Required
CFA Ultra Light Tanker / Slip-on	
CFA Light Tanker	
CFA Medium Tanker	
CFA Heavy Tanker	
CFA Pumper	
CFA Pumper Tanker	
CFA Rescue	
CFA Ultra Heavy Tanker	
CFA Big fill trailer	
CFA Field Command Vehicle	
CFA Field Operations Vehicle	
DEECA / FFMV - Field Command Vehicle	
DEECA / FFMV - Heavy Tanker	
DEECA / FFMV - Ultra-Light Tanker	



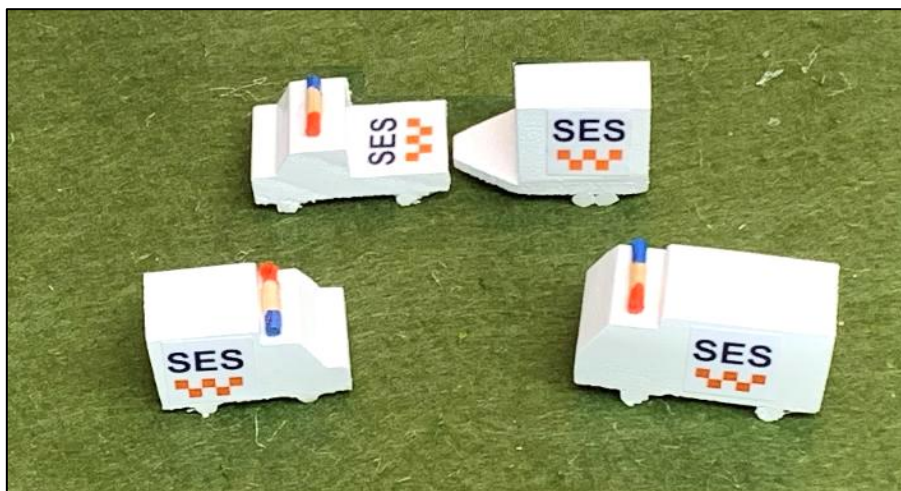
Western Australia

Item	Quantity Required
BFB - Light tanker	
BFB - 2.4B	
BFB - 3.4U	
BFB - 4.4B	
BFB - 12.2	
BFB - Fast-fill trailer	
FRS - Light Tanker	
FRS - Urban Pumper	
Incident Control Vehicle	
Parks & Wildlife, Gang Truck	
Parks & Wildlife, Heavy Duty	
Parks & Wildlife, Light Tanker	



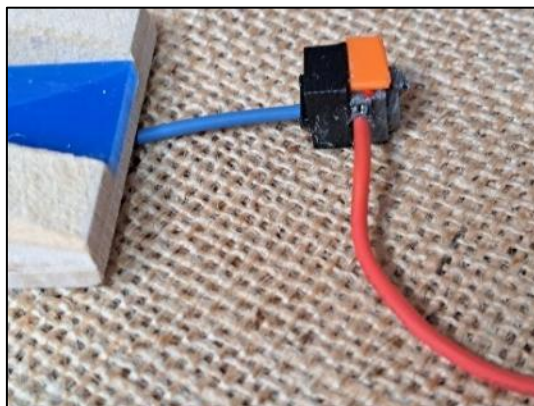
Ambulances & other emergency vehicles

Item	Quantity Required
Ambulance, Australian Capital Territory	
Ambulance, New South Wales	
Ambulance, Northern Territory	
Ambulance, Queensland	
Ambulance, South Australia	
Ambulance, Tasmania	
Ambulance, Victoria	
Ambulance, Western Australia	
SES trailer	
SES truck	
SES utility	



Specialist equipment

Item	Quantity Required
Appliance bogged in deep sand	
Hose line	
Hydrant	
Lighting Tower	
Trailer - Fuel	
Trailer - Radio Repeater	
Water pump with hoses	



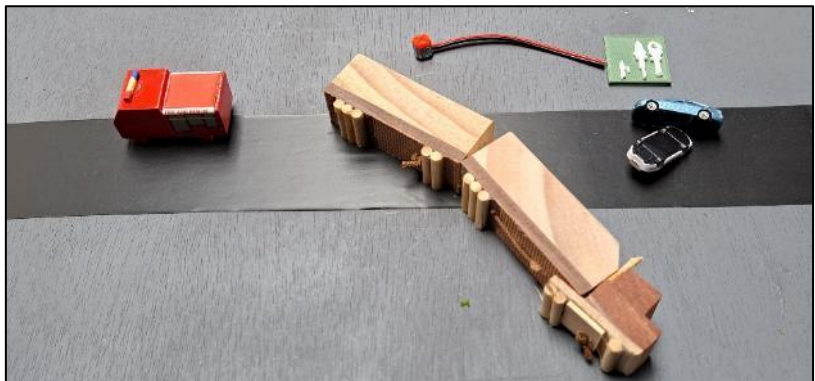
Assets

Item	Quantity Required
Bridge (road)	
Bridge (rail)	
Campsite	
Car	
Haystack	
LPG Cylinder (industrial)	



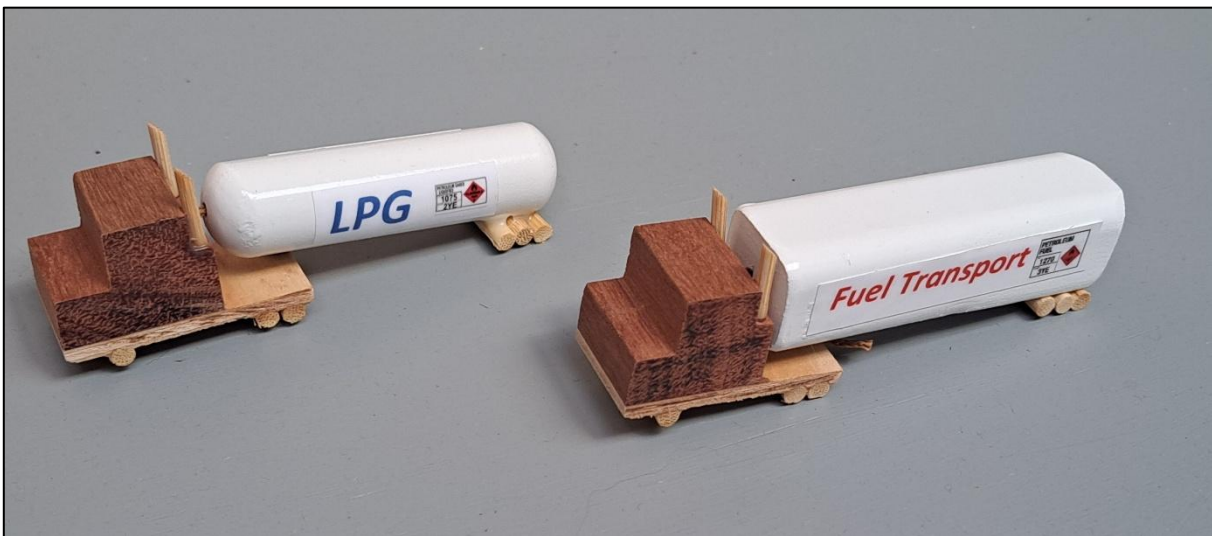
Assets

Item	Quantity Required
Pipeline	
Plantation – Eucalypt	
Plantation - Pine	
Power lines	
Power poles	
Railway line	
School bus	
Semi-Trailer / Road train	



Assets

Item	Quantity Required
Solar Farm	
Tower (mobile phone)	
Tower (radio repeater)	
Truck - Fuel	
Truck - LPG	
Walk trail	
Wind turbine	



Assets – Buildings

Item	Quantity Required
Bushfire Shed	
Council Office	
Evacuation Centre	
Fire Station	
Fuel / Service Station	
Grain Terminal	
Grocery Store	
Hay Shed	
Hospital	



Assets – Buildings

Item	Quantity Required
House (burnt out)	
House (exposure - signs of charring)	
House (fully involved)	
House (internal involvement)	
House (timber)	
House (timber, partially involved)	
House (timber with corrugated iron roof)	
House (white)	
House (white, partially involved)	
House with solar panels	



Assets – Buildings

Item	Quantity Required
Incident Control Centre	
Motel	
Police Station	
Power Station	
Residential Aged Care	
Prison	
Pump Station	
Rangers Station	
School	
Shed	
Stable	
Supermarket	
Tyre Shop	
Water Treatment	
Winery	



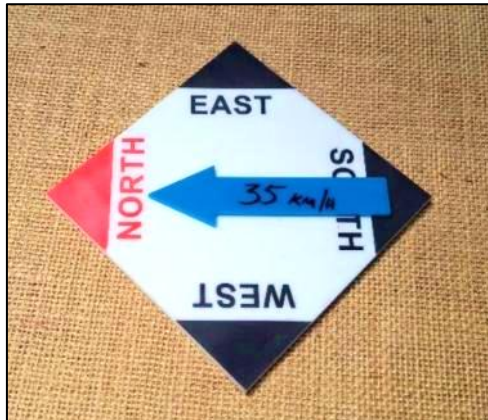
Other assets

Item	Quantity Required
Goods train	
Train, electric	
Truck - LPG	
Truck - Four Axle Rigid	



Direction & Scale Tools

Item	Quantity Required
Scale Ruler	
Fire direction arrow (small red)	
Wind direction arrow (small blue)	
Wind direction (arrow & compass base)	



Fire features

Item	Quantity Required
Burnt ground (fabric)	
Burnt ground (mesh)	
Fire Danger Rating boards (set of 4)	
Fire scar / fire-run into RUI	



Fire features

Item	Quantity Required
Fire shape - small	
Fire shape - medium	
Fire shape - large	
Fire shape - extra large	
Fire shape - fire finger left	
Fire shape - fire finger right	
Fire shape - flank to head fire	



Fire features

Item	Quantity Required
Fire shape, flexible	
Fire shape - backburn	
Fire shape, wind driven edge	
Fireline (predicted)	
Lightning strike	

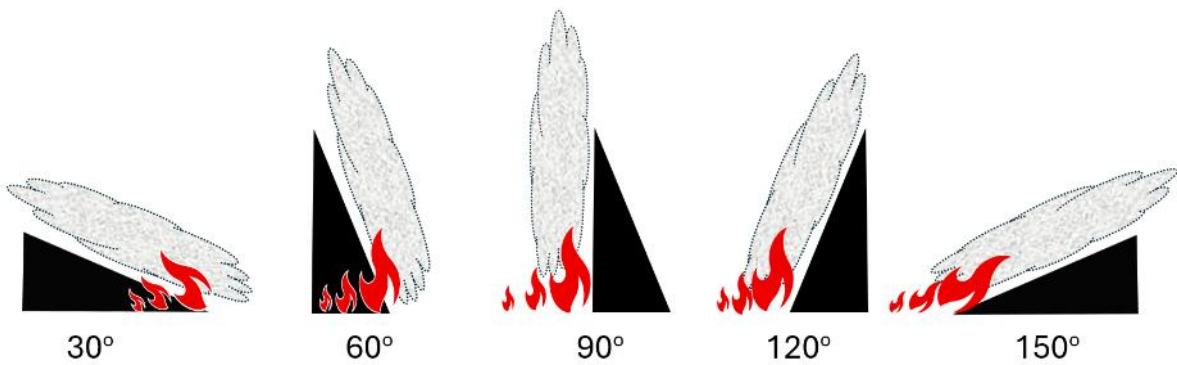
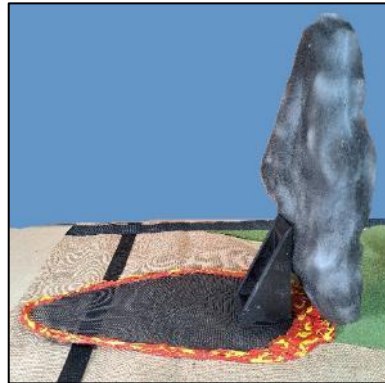


Fire features

Item	Quantity Required
Smoke	
Smoke - plume, small vertical	
Smoke stand	
Spot fire	
Spot fires (no wind) set of 3	
Spot fires (wind) set of 3	
Unburnt pocket	

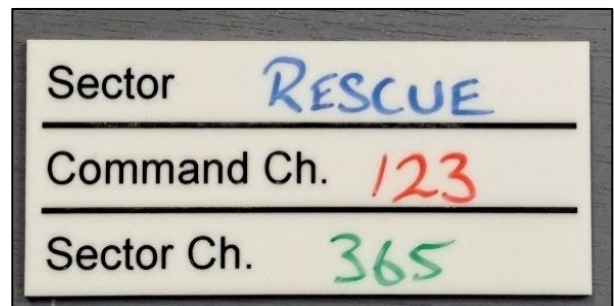
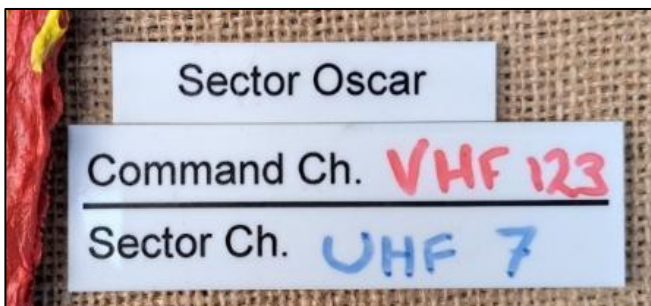


Smoke Stand



Incident Control Features

Item	Quantity Required
Boundary - Division	
Boundary - Sector	
Collar tank	
Communication panel	
Communication panel (functional sector)	



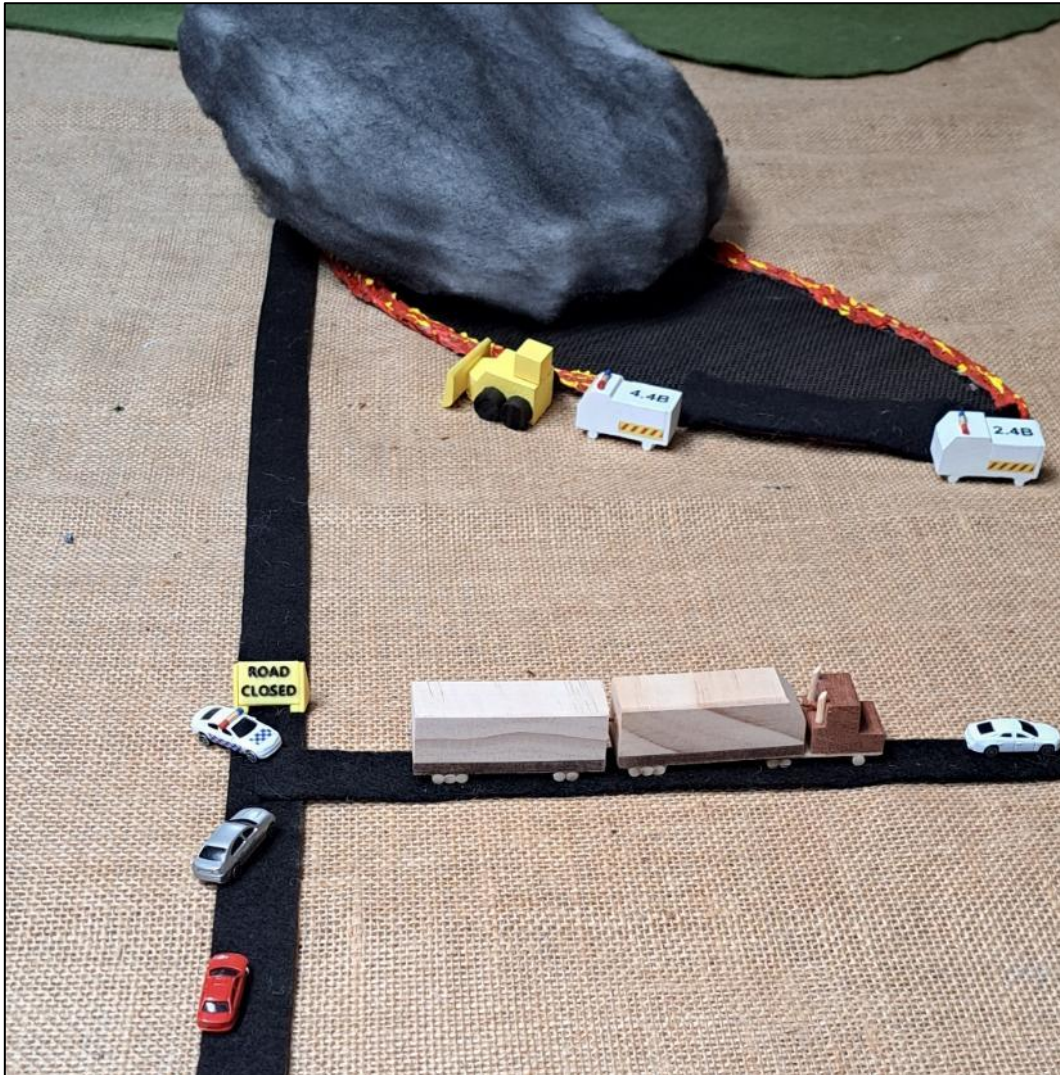
Incident Control Features

Item	Quantity Required
Community Warnings Bushfire (set)	
Community Warnings Cyclone (set)	
Community Warnings Flood (set)	
Community Warnings Storm (set)	
Containment line	
Command Point	
Control point	
Division / Sector name - Blank tile	
Sector name - (Alpha, Bravo, November,	
Sector name - (Charlie, Delta, Papa &	



Incident Control Features

Item	Quantity Required
Road closed sign	
Detour sign (set of 2)	
Trigger Point	



Landscape features

Item	Quantity Required
Bush (fabric)	
Bush (fabric – large section 0.5 x 0.9 m)	
Dam	
Hill	
Lake	
Landscape Mat, Large (approx. 2.4m x 1.8m)	
Landscape Mat, Remote Area	
Landscape Mat, Riverine	
Landscape Mat, Standard	

Landscape Mats



Standard



Riverine



Remote Area

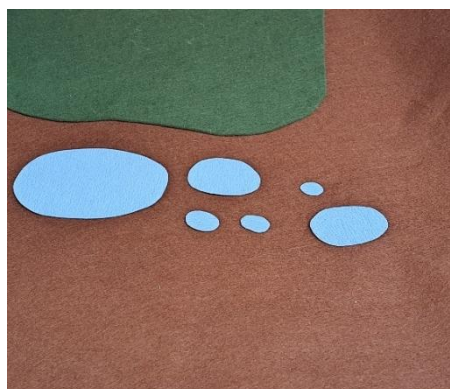
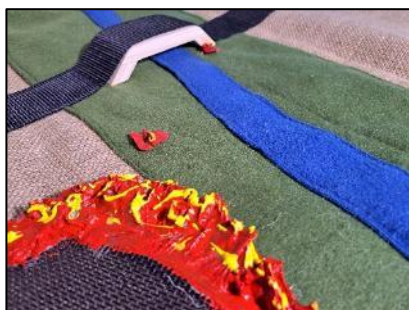


Large landscape mat



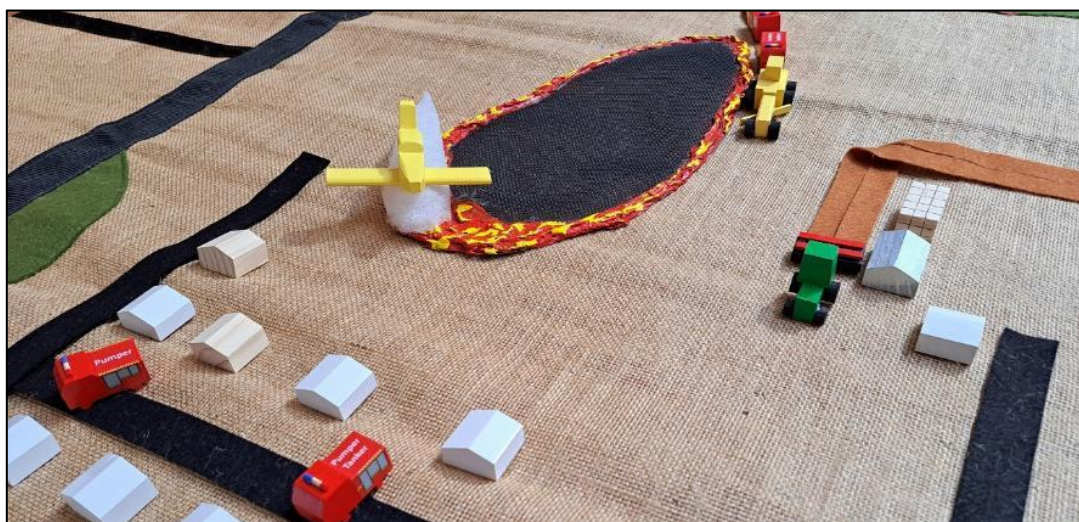
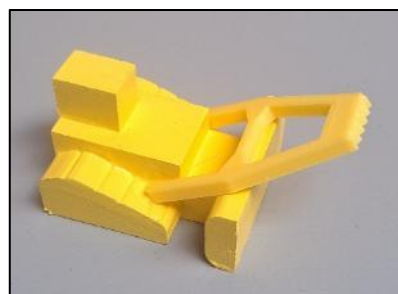
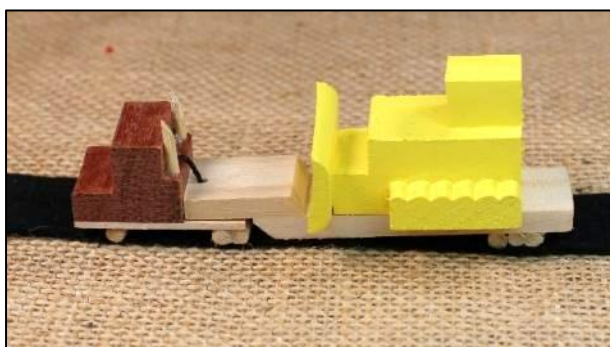
Landscape features

Item	Quantity Required
Log heap	
Log heap - burning	
Refuse site (general & green waste)	
Refuse site (general waste)	
River (fabric)	
Road - gravel	
Road - main road	
Road - secondary road	
Road - street	
Rocks	
Salt lakes (set of 6)	
Sports Oval	
Standpipe	
Tree and separate base	
Water Tanks	



Machinery

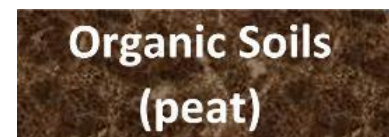
Item	Quantity Required
Bulldozer D6	
Bulldozer D9 with tree arm	
Front end loader	
Grader	
Grader windrow	
Harvester	
Low loader	
Tractor & plough / speed tiller	
Water truck	



Markers

Markers are labels or symbols used to represent an asset or a factor for consideration.

Item	Quantity Required
Aboriginal Heritage Site	
Aboriginal Heritage Site (small)	
Acid Sulphate Soils	
Airstrip	
Caravan Park	
Dieback Protection Area	
Environmentally Sensitive Area	



Markers

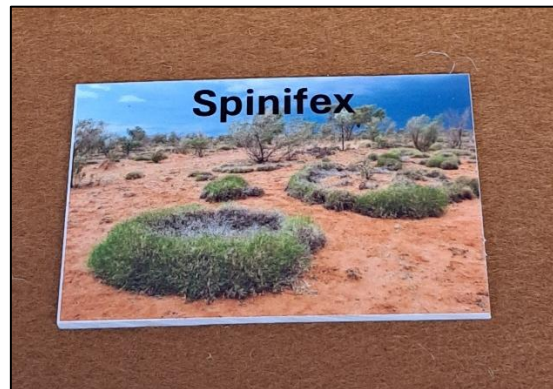
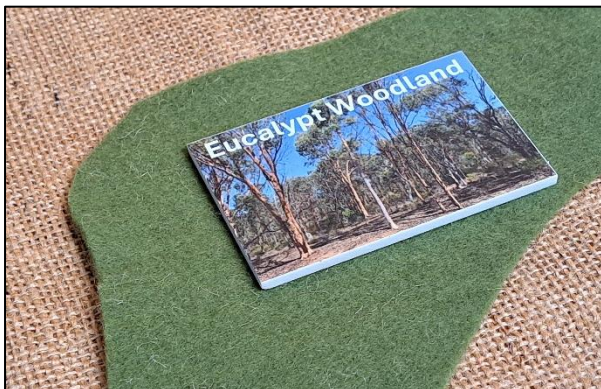
Item	Quantity Required
Firefighter, drip torch ignition	
Firefighter, rake hoe trail	
Historic Site	
Low Fuel Area	
Mine	
No signal	
Remote Area Firefighting Team (RAFT)	
Organic (Peat) Soils	
Unexploded Ordnance (UXO)	



Fuel cards

These high-quality photos are mounted on 50 x 80 x 3mm white acrylic and are used to identify different fuel types.

Item	Quantity Required
Acacia Woodland	
Banksia Woodland	
Button Grass	
Chenopod Shrubland	
Coastal Heath	
Crop	
Eucalyptus Woodland	
Grassland	
Jarrah Forest (WA)	
Karri Forest (WA)	
Mallee	
Pasture (Eaten out)	
Pasture (Grazed)	
Pasture (Natural)	
Pine	
Rain Forest	
Savanna Woodland	
Shrubland	
Spinifex	
Spinifex Woodland	
Wetland	



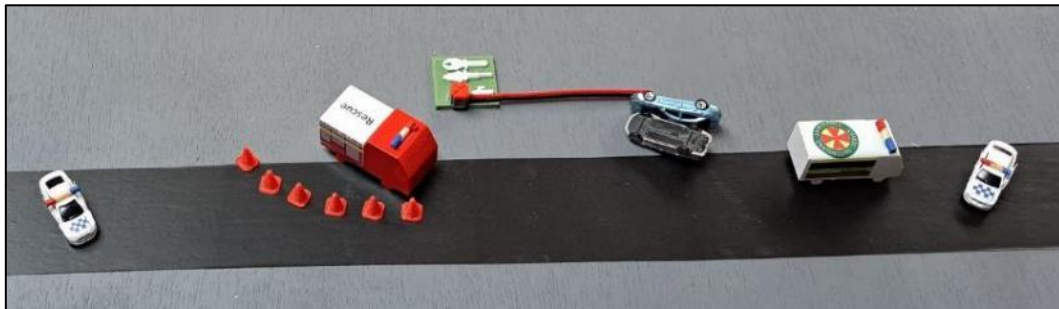
HAZMAT Kit



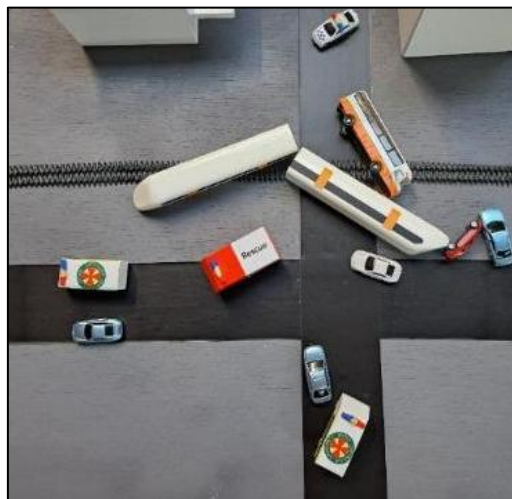
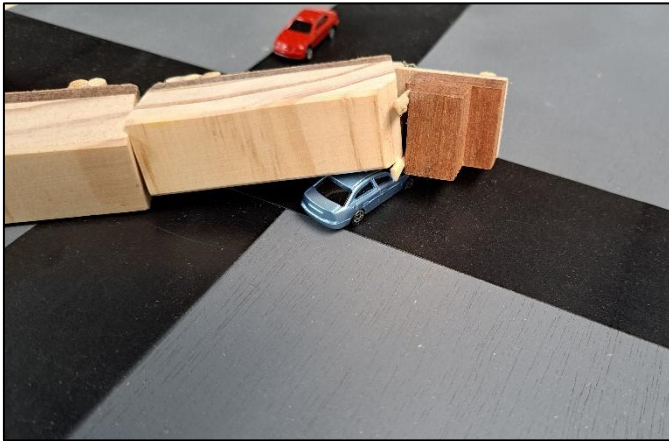
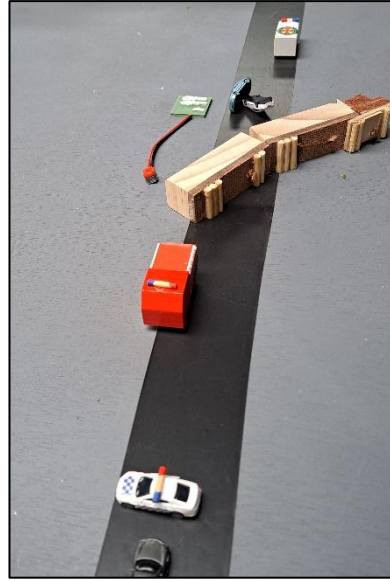
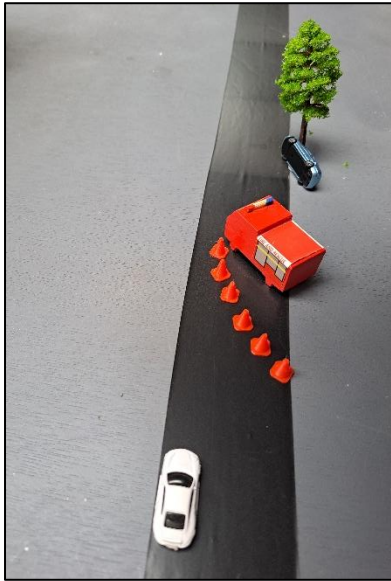
Item	Quantity Required
Bulk storage tank (2 x yellow)	
Bunding (earth bund)	
Casualties (set of 4 – 1x red, 1x yellow, 1x orange, 1x seated)	
Chemical drum - 200 litre	
Chemical drum - 4 x 200 litre on pallet	
Chemical drum - 200 litre leaking	
Chemical container 1,000 litre IBC	
Chemical container 1,000 litre IBC leaking	
Communication panel – functional sector	
Demarcation – hot, warm & cold zones	
Demarcation – plume/threat zones (red, orange, yellow)	
Gas / vapour cloud	
Plume	
Spill – Liquid, single product small	
Spill – Liquid, single product medium	
Spill – Liquid, single product large	
Spill – Liquid, two products mixing	
Spill – Liquid, off-gassing	
Spill – Powder / granules (yellow)	
Truck (Four Axle Rigid)	
Truck - LPG	
Truck - Fuel & fuel spill (yellow)	
Wind direction arrow (small blue)	



Crash / Rescue Kit

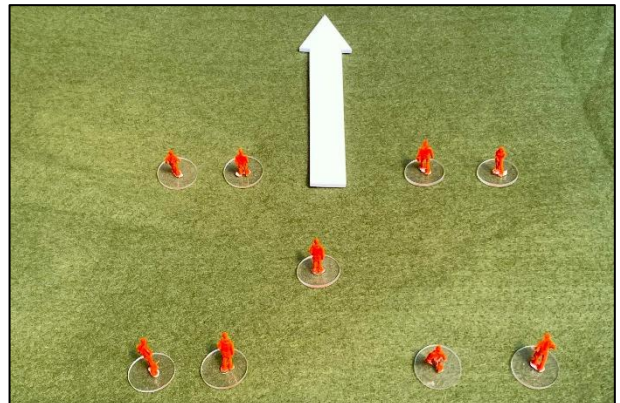
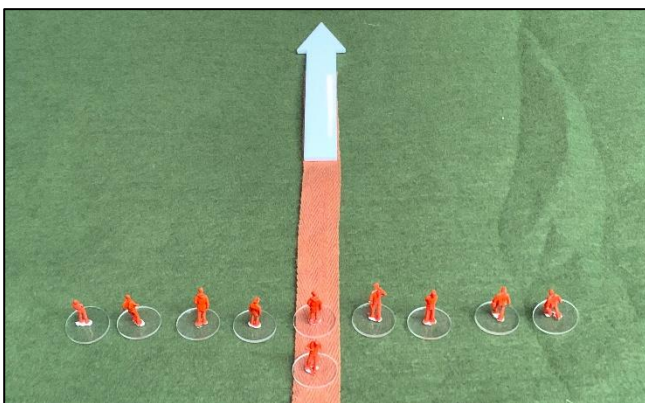


Item	Quantity Required
Ambulance	
Bus	
Car with fuel leak	
Car Vs House	
Car fire	
Casualties (set of 4 – red, yellow, orange & seated)	
Communication panel – functional sector	
Crash debris	
Fuel spill (yellow)	
Helicopter – rescue	
Light plane crash	
Police car	
Rescue stretcher / litter (empty)	
Rescue stretcher / litter (with casualty)	
Rescue tools on salvage sheet	
Road cones	
Train – freight train (engine & 6 carriages)	
Tree with separate base	
Truck – Fuel truck with running fuel fire	



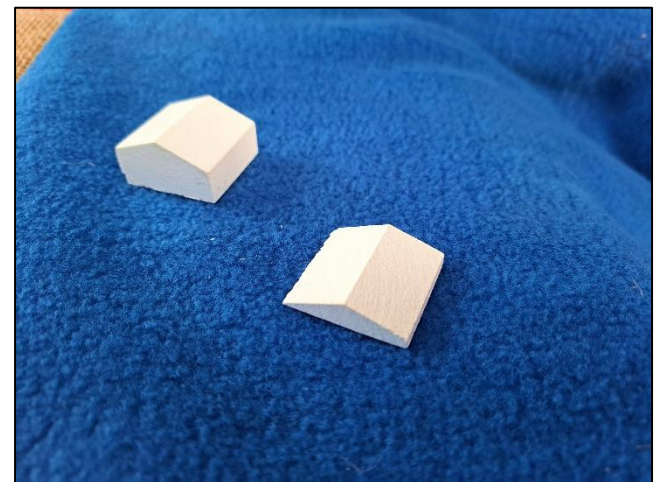
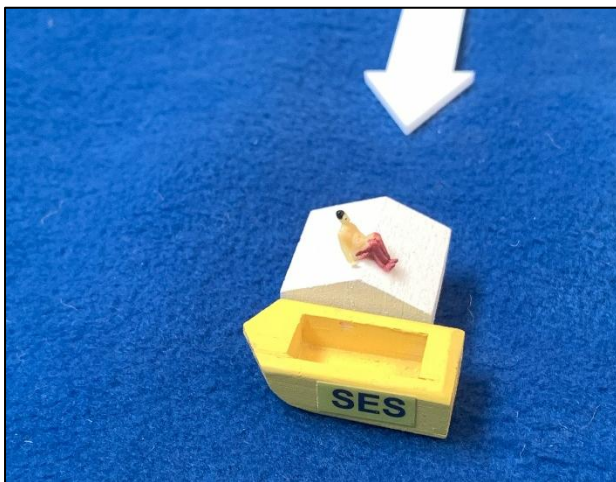
Land Search

Item	Quantity Required
Search boundary	
Rescue stretcher / litter (empty)	
Rescue Stretcher / litter (casualty)	
Figure – Missing person (no base)	
Figure – Police (blue)	
Figure – Fire and Rescue (red)	
Figure – Rural Fire Service (yellow)	
Figure – SES (orange)	



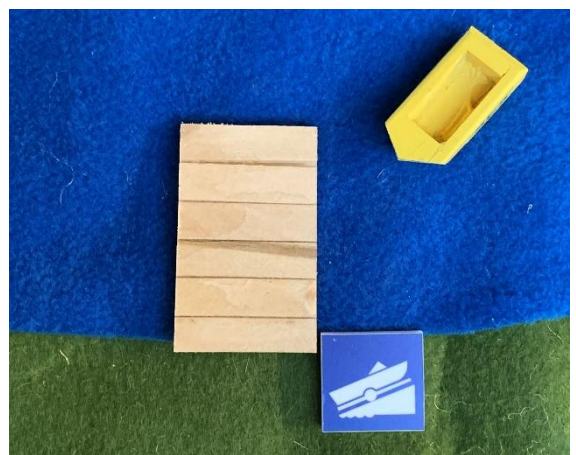
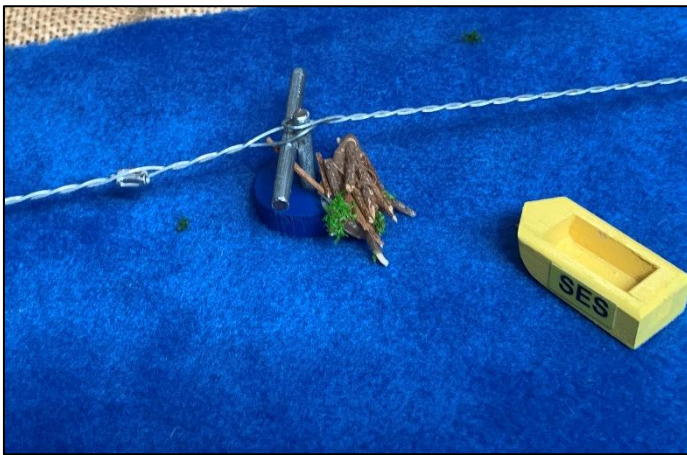
Severe Weather

Item	Quantity Required
Boat Ramps (marker)	
Boat – navigation (green, red & white) – powerboat	
Boat – navigation (green, red & white) – sailboat	
Building - House (inundated)	
Building - House (gas bottles)	
Building - House flooded person to be rescued	
Building - House – steep pitch	
Corrugated iron (debris/ safety risk)	
Debris - construction	
Debris - vegetation	



Severe Weather

Item	Quantity Required
Flooded car person requiring rescue	
Log with person requiring rescue	
Jetty	
Landslide - Large	
Landslide - Small	
Livestock – sheep	
Livestock – cow	
Livestock - horse	



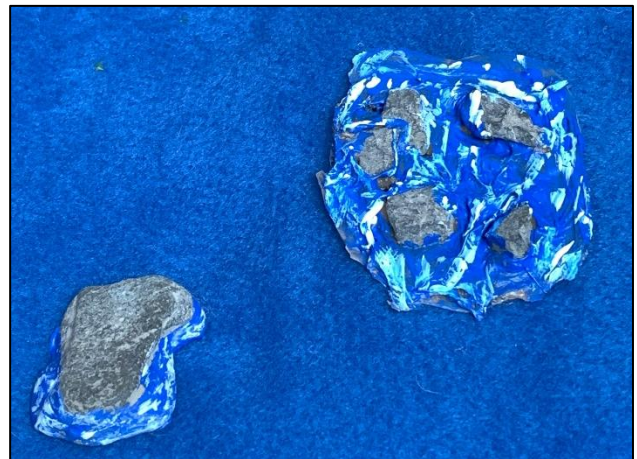
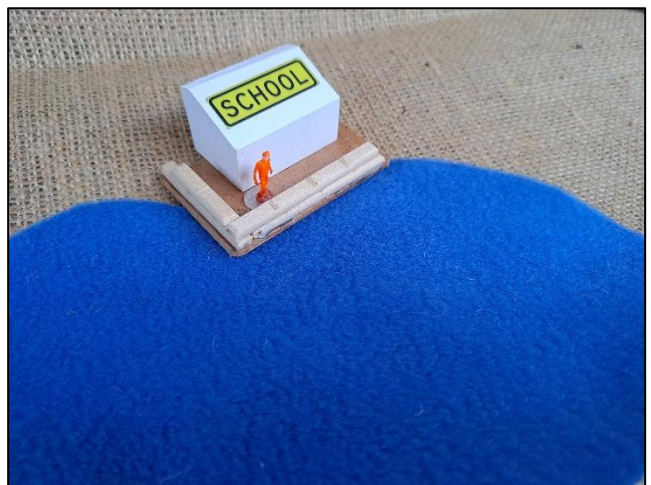
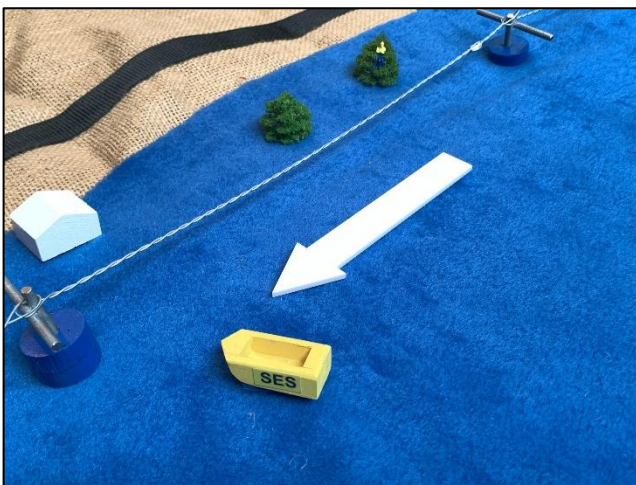
Severe Weather

Item	Quantity Required
Logs (flood debris)	
Power poles inundated (lower, blue base)	
Predicted food level	
Request For Assistance (RFA) tags	
Road cut through by flood waters	
Rocks (small - flood debris)	



Severe Weather

Item	Quantity Required
Sandbags on base	
SES trailer & flood boat	
Tree tops (flooded)	
Water flow direction (white arrow)	
Water flow - rocks	
Waterflow - rapids	
Water inundation (blue)	



Bushfire Model

Sharing Firefighting Knowledge

bushfiremodel.com.au